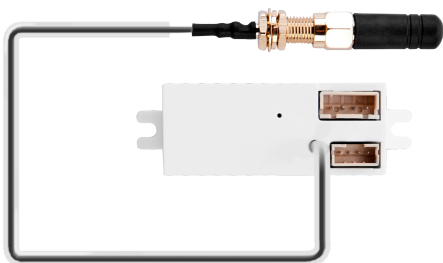


Fixture Adapter & Signal Booster

Antenna not included in the product package



FEATURES

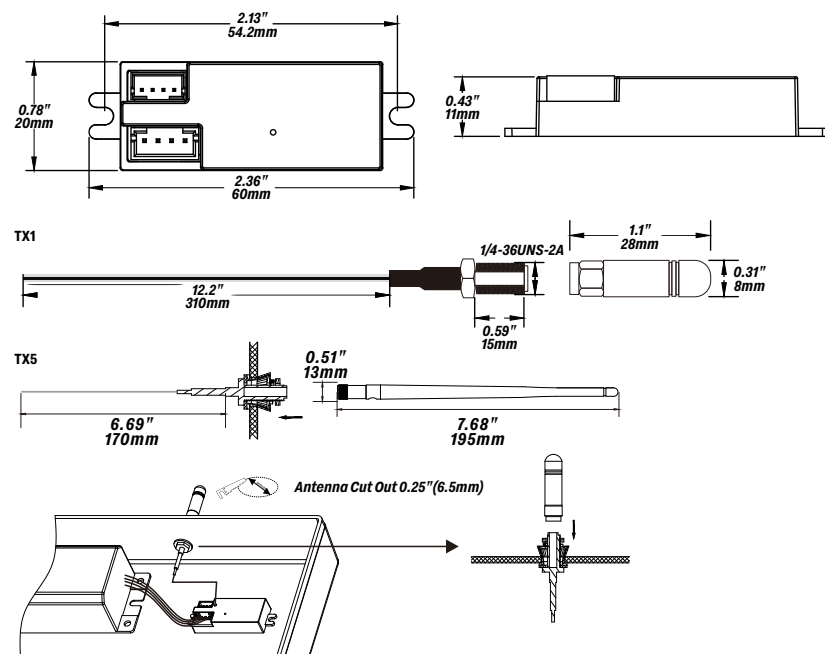
Keilton FA102-W fixture adapters are designed to increase the Bluetooth signal in a networked lighting control system, especially for outdoor applications. They feature an external long-range antenna that extends wireless coverage for outdoor motion detection linkage.

- Max. Bluetooth wireless signal range of up to 860 ft @ TX1, 1640ft @ TX5
- Equipped with relay and single channel 0-10V dimming control
- Compatible with Keilton Eco Sensor products
- Can be used without being connected to a luminaire to increase Bluetooth signal strength and range for entire Keilton network

* Note: All application environments will not necessarily be able achieve max signal range due to factors such as signal obstructions, interference, and luminaire/housing design. Testing is recommended to ensure performance for the applications.

DIMENSIONS

Unit: inch/mm



SPECIFICATIONS

Input Voltage: DC 12V

Power Supply Source: Min 150mA

Dimming: Class 2, 0-10V DC 10mA Max

Sinking Current: 10mA Max

Bluetooth Transmit:

TX1:860ft Max, TX5:1640ft Max

Radio Frequency: 2.4GHz \pm 75MHz

Bluetooth Version: 5.0

Housing Material: UL 94-V0

Indoor/Outdoor Use

Operating Temperature: -30°C to 65°C,
-22°F to 149°F

Storage Temperature: -30°C to 85°C,
-22°F to 185°F

IP Rating: IP20

Antenna: IP65

Color: White

Warranty: 5 years warranty

Comply to UL8750, UL1376, RoHS

Safety: cULus Recognized Component

LED Controller E504054

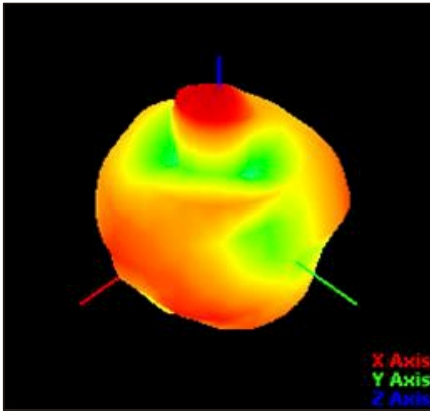
FCC ID: 2A26YLTkTVT2022

DID: D061367

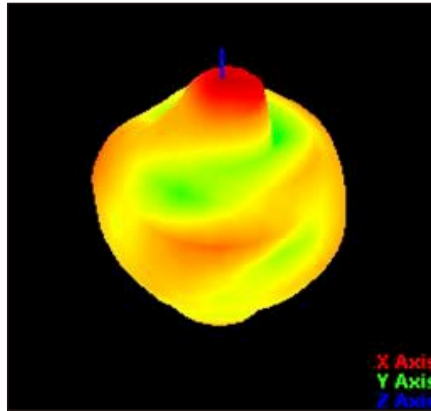
DLC: NLTRC5KL0TN

MODEL	DESCRIPTION
FA102-W B1	Sensitivity adjustable and no daylight harvesting function
FA102-W C1	Daylight harvesting function
TX1	2.4G-1dbi Antenna
TX5	2.4G-5dbi Antenna

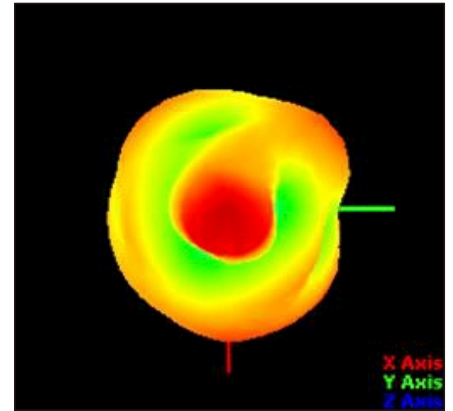
TX1 TRANSMISSION



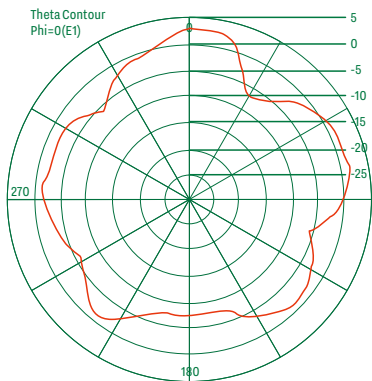
T45-P45



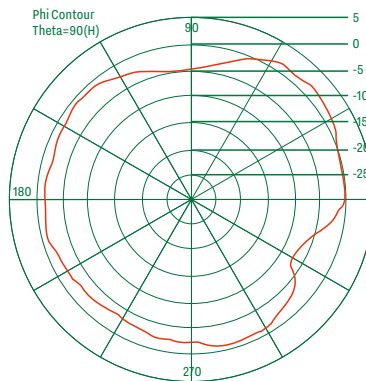
T45-P225



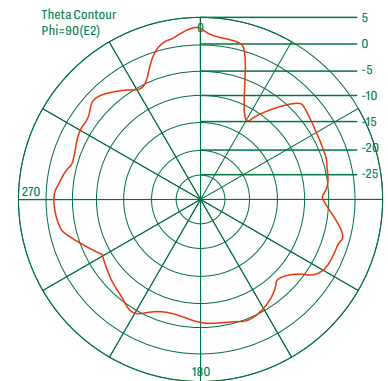
T0-P0



X0Z



XOY



YOZ

Wireless Signal Strength	
Transmission Distance	RSSI(dbm)
164ft(50m)	-43
328ft(100m)	-45
492ft(150m)	-49
656ft(200m)	-54
820ft(250m)	-57
860ft(262m)	-58

Note: The test transmission distance of two FA102-W

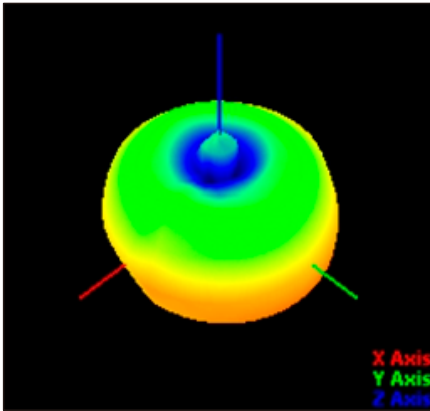


3.48
2.5
1.52
0.54
-0.44
-1.41
-2.39
-3.37
-4.35
-5.33
-6.31
-7.29
-8.27
-9.25
-10.23
-11.21
-12.19
-13.17

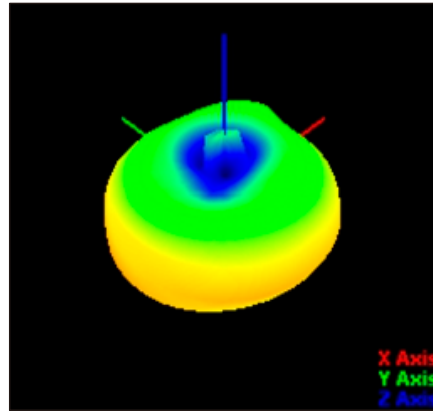
Coordination System Description:

Line Color	XYZ	Theta-Phi
Red L.	Axis X	Theta90-Phi0
Green L.	Axis Y	Theta90-Phi90
Blue L.	Axis Z	Theta0

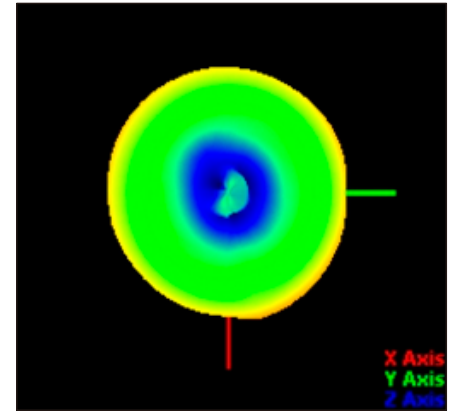
TX5 TRANSMISSION



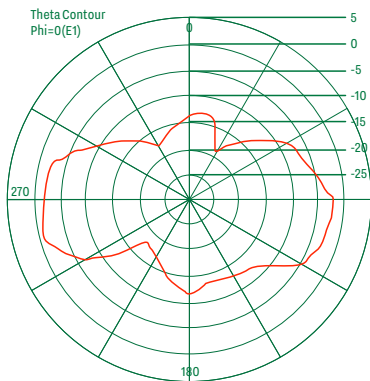
T45-P45



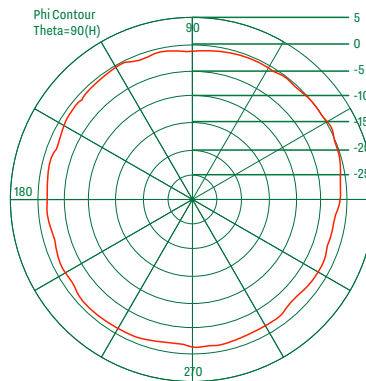
T45-P225



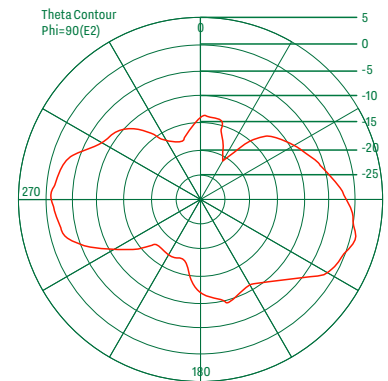
T0-P0



XOZ



XOY



YOZ

Wireless Signal Strength	
Transmission Distance	RSSI(dbm)
328ft(100m)	-37
656ft(200m)	-47
984ft(300m)	-48
1312ft(400m)	-59
1640ft(500m)	-60

Note: The test transmission distance of two FA102-W



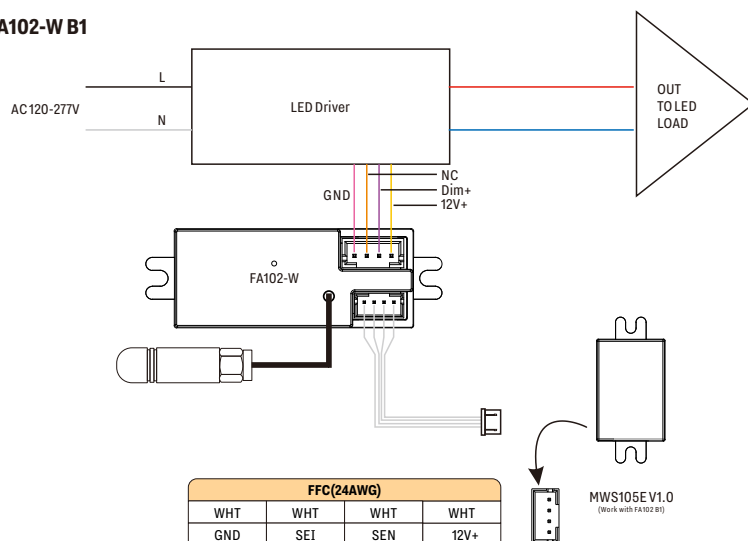
5.4
3.89
2.38
0.87
-0.65
-2.16
-3.67
-5.18
-6.69
-8.21
-9.72
-11.23
-12.74
-14.26
-15.77
-17.28
-18.79
-20.31

Coordination System Description:

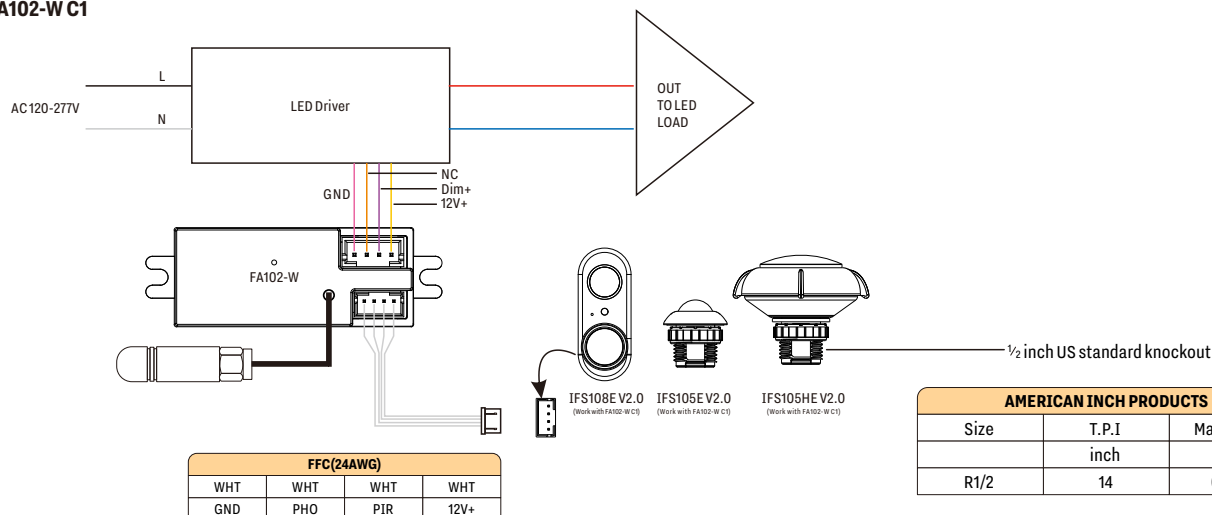
Line Color	XYZ	Theta-Phi
Red L.	Axis X	Theta90-Phi0
Green L.	Axis Y	Theta90-Phi90
Blue L.	Axis Z	Theta0

WIRING

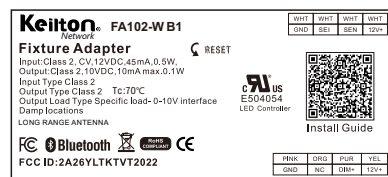
FA102-W B1



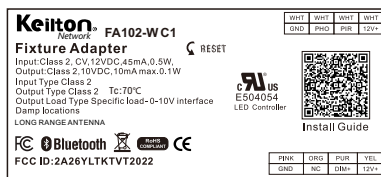
FA102-W C1



MARKING



FA102-WB1



FA102-WC1

The Bluetooth word mark and logos are registered trademarks owned by Bluetooth SIG, Inc. and any use of such marks by Litetrace is under license. Other trademarks and trade names are those of their respective owners.

APP DOWNLOAD

